

PRESIDENT'S COMMENT

"Through the unknown, we will find the new" (Baudelaire) in 2012.

The New Year is full of promises for WSA.

In January two of our members started off the year with exhibitions in ArtsPost - Catherine and Barry (our editor) Smith. A good way to begin the year WSA!

We have good enrolments coming in for WSA classes. We have a calendar of events filling up – including the Painting and Printmaking Awards at the Hamilton Gardens, the Business Art Awards, the Member's Exhibition (start planning), workshops, sketch crawls, gallery crawls – keep your eye on this newsletter and the Arts Waikato website. We also will look forward mid-year to the production of Campbell Smith's new play on Ida Carey - a tribute to Ida and WSA and, of course, Campbell.

We have some challenges as we continue to work with the Hamilton City Council on the use of Artpost space and longer term plans for a dedicated art gallery in the city. We have the opportunity of working with and supporting other groups on Hamilton's Sesquicentennial (150th) projects also to promote public art and history in the city.



DIANNE ADMIRING HER OWN FEET AT KAWHIA

On behalf of WSA I attended the farewell function at the Waikato Museum for director Kate Vusoniwailala and extended our thanks and best wishes to her for the future. The turn out was a tribute to the dedication Kate has had for her job and her innovative approach to a wide range of exhibitions appealing to a wide range of community interest.

Members will also share with me in extending our sympathy to the deLisle family on the death of a long term member and great contributor to both WSA and the arts in Hamilton generally, Mary deLisle.

And to adapt a quote from J F K"think not this year what WSA can do for you, but what you can do for WSA and the community at large. Bring it on – 2012!

Dianne Yates

CAVE ART AGAIN – A MUST SEE

The film "Cave of Forgotten Dreams" by Werner Herzog is doing the rounds now and is a 'must see' for anyone interested in the development of the human species and more specifically art. This Chauvet Cave, in the south of France, with its extensive drawings and amazing collection of bones was sealed off by a giant landslide about 20 000 years ago but was rediscovered by cavers (M. Chauvet was one of them) in 1994. Carbon dating has determined that these drawings were mainly done in two stages, 30 000 and about 35 000 years ago.

Found on the cave floor are the remains of many animals, most now extinct, or gone from the region. They include hyenas, wolves, leopards, rhinoceros, bison, cave bears, cave lions, aurochs, mammoths, horses. The cave is thought to have been a lair mainly for cave bears and to have been

frequented by man, maybe for shelter but more likely as a place for spiritual expression. The authenticity of the artefacts is determined by the presence of limestone formations covering them and the presence of calcite crystals over the surface of the cave art.

It is the spectacular nature of this very ancient mural art that has fascinated the art world. Most of the animals found on the cave floor

Rhinoceros Fighting



are remarkably depicted in the sketches but it the expression of these drawings which is so stunning. For the most ancient of art drawing so far discovered it is the style of it that captures the imagination. These early artists showed a flowing style, movement, perspective and shading together with simple lines – shades of Monet !

The animals can be seen challenging, running, fleeing, fighting and falling. Some are rampant, some are sounding. Most drawing is done in charcoal with occasional shading but interestingly there are also, in these caves both negative and positive human handprints done with pigments in what appear to be red and yellow ochres. One of the printmakers is identifiable by a crooked little finger – the first identifiable printmaker in human history?

One of the most interesting features of this film is its examination of the nature of what it is to be human. One of the things I noticed was that in nearly all the paintings the animals appear to be moving from right to left. Why? The film doesn't explore this but I wonder if is simply because of the right handedness of the artists. Apparently other early cave paintings are similar. Some of the commentary was about human communication and expression – through art and music. Flutes have been found from a similar era and it seems that human song or music may have been one of our earliest ways of expression as well. Earlier than we've hitherto thought.

Early rock art is often retouched (as is still done by Aborigines who have been in Australia for over 60 000years) and their attitude is that they are simply the spiritual extensions of the original artists. In fact when you think about it they are more than that; actually extensions of their forebear-artists' genes.

If you haven't seen this film, do go along and see the origins of your specie's art. It is in the documentary form and lasts about 90 minutes. **Barry Smith**

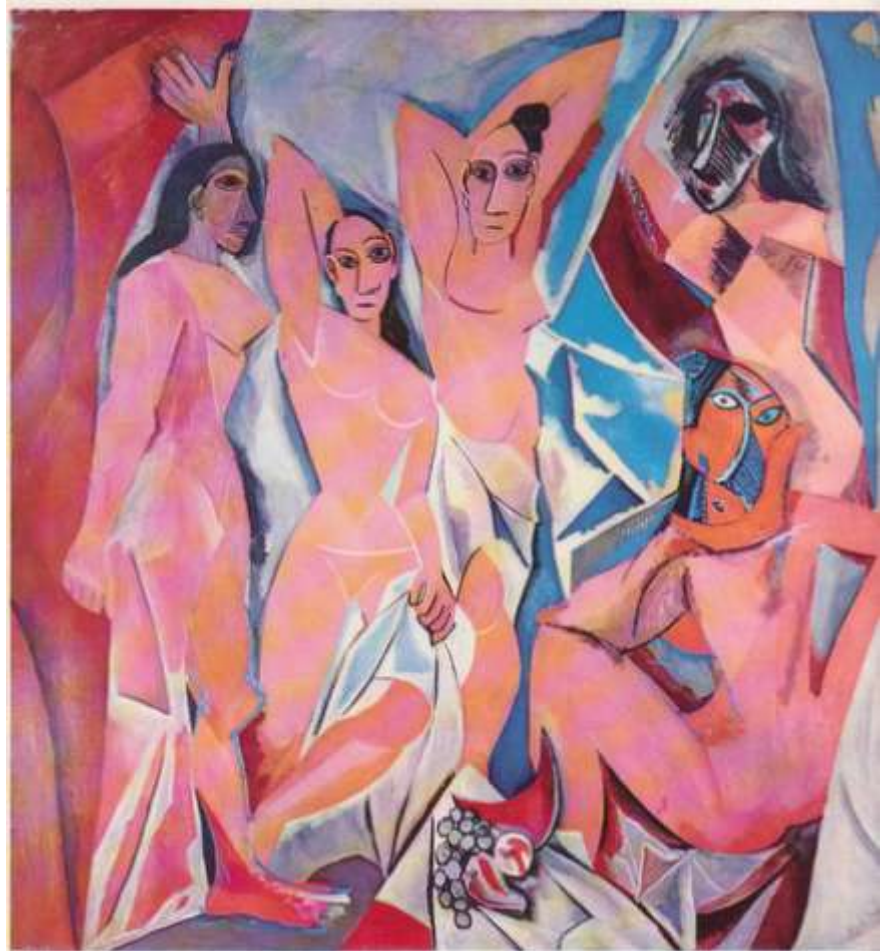
IN ART GALLERY OF NEW SOUTH WALES, SYDNEY TO 25TH MARCH

Pablo Picasso (1881-1973)

Masterpieces from the Musee National Picasso, Paris

The exhibition is showing at the Art Gallery of New South Wales till 25th March 2012. Tickets cost AU\$25.00 and specify date and time for admission.

The collection from Paris are the 'Picasso's Picasso's – the works he kept in his own



Pablo Picasso: Les Demoiselles d'Avignon. 1907

possession, which only after his death in 1973 were given to the French State by his family in lieu of TAXES. As he proclaimed: 'I am the greatest Picasso collector in the world'.

Picasso's working career spanned seven decades, always innovative and prolific, embodying the creative spirit of the modern age but was always remained connected with art of the past.

1895 - 1905

Picasso's talent was evident from a young age showing exceptional skills in figure drawing. He furthered his training at various art schools in Spain. At 19 he took a trip to Paris when one of his works was selected for the Exposition Universelle. During this time was discovering works of the post-impressionists and was befriending writers and artists who would come to define art in the modern era.

1906 – 1915

In 1907 Picasso painted the complex and iconic *Les demoiselles d'Avignon*, (see below). A dense and shallow composition of angular, contorted figures, it shocked the art world and perplexed even his most avant-garde friends and contemporaries. Picasso became fascinated with tribal art, as seen in the mask-like, chiselled features and angular bodies. In this period he took up wood carving and bronze

sculpturing. Picasso's collaboration with Georges Braque produced possibly the most significant innovation in modern painting: 'Cubism'. Cubism opened up infinite possibilities for painting, including pure abstraction, and was developed in many forms.

1916 - 1924

World War 1 sent many Parisian artists to the front, Picasso, as a foreign national, continued to work largely undisturbed. With the shock and destruction of the war Picasso returned to the classics, his influences being artists like Renoir, as seen in *La dance villageoise* in 1922.

1925 - 1935

From 1925 into the 1930's Picasso was involved with the Surrealists and from 1931 he was interested in making sculpture and was especially noted for a series of enormous bronze heads bringing their rotund, pebble-like shapes into three-dimensional form.

1936 - 1951

By 1936 the Spanish Civil War had a profound effect on Picasso, the expression of which culminated in his painting *Guernica* in 1937. During this time Picasso created some of his most complex portraits, combining cubism, surrealism, and expressive colours and angles to convey a distinctive psychological intensity in his work. During the Nazi occupation Picasso continued to work in Paris. Here he captured the atmosphere of tension and uncertainty, symbols of death such as the skull pervades Picasso's work. Much of his art in this period reveals his passionate objection to war and his commitment to communism.

1952 - 1972

In 1953 he met and married Jacqueline Roque and in 1955 moved permanently to the south of France. Picasso depicted Jacqueline more than any other women in his lifetime, creating in one year alone over 70 portraits of her. In 1956 he made an extraordinary series of sculptures inspired by bathers on the Mediterranean coast.

Acclaimed as a master of modern art, having pioneered the art of abstraction, and experimented with new media he remained master of traditional oil painting and bronze sculpture.

Pablo Picasso died on April 8, 1973.

Gary Douglas

GRATEFUL

Printing of WSA newsletter is supported by



Ulster St. Hamilton

MARY DE LISLE

WSA is saddened by the passing of Mary de Lisle on the 11th January 2012.



Mary de Lisle

Mary, wife of the late Aubrey de Lisle a past President of WSA, had been a member of WSA since 1938. She was the third woman to graduate in architecture and with Aubrey, the first husband and wife architectural couple in New Zealand. Together they had two children and five grandchildren.

She was a founding committee member and third President of the Awatere Club in Hamilton. She developed an interest in print making and she and with Aubrey transformed the children's old play room into an art studio, with a printing press and associated paraphernalia on one side of the room, Aubrey's water colouring bench on the other, and a comfortable seating area for relaxation between creativity. She exhibited with fellow print makers in Hamilton and around the country.

She explored many themes, including for example architectural detailing and cultural symbols, as well as more universal subjects such as signs of the Zodiac, landscapes, flowers and still life.



Etching from WAM Barry Hopkins Collection

And this from Ruth Davey

"Coming to Hamilton in the sixties, I joined the WSA and met Mary de Lisle. She was a practising architect with experience in drawing and painting, took to the joys of printmaking. She was always supportive as we set up print facilities, struggling to move from adapted mangle to a real etching press. She joined my classes in 1973, so I suppose we have talked printmaking for 40 years. I feel privileged to have visited her during the last few weeks, nearby at Hilda Ross Hospital. I made brief calls taking her bits of etchings or a small drawing or a flower She was lucid and responsive. But one day she was not there.

I miss a faithful friend and fine artist-printmaker.

Ruth Davey"

WSA IN THE NEWS AGAIN (2005)

The Waikato Society of Arts departed from its usual procedure this week by calling a press conference to announce that once again it would be presenting at the Hamilton Gardens its Waikato Painting and Print making Awards, sometimes referred to as "The Summer Art Awards".

In making the announcement the Chairman of the Society, Mr Martin Chuzzlewitt told a packed conference, "the public want to buy original art and we must make it as easy as we can for them to do just that."

Addressing remarks directly to artist members of the Society and to artists nationwide, Mr Chuzzlewitt reminded them that New Zealand is a work in progress. "This country is changing" he said, "and if we don't change ahead of the wider society then we can forget art as a forecaster and commentator of social change and instead leave ourselves as simply reflectors of times past. The day of plastic frilly things is upon us "Mr Chuzzlewitt opined " the day when you wake in the morning and find your nails polished and your hair combed by your bedhead valet is just around the corner and if you don't want to have your art styles dictated by subliminal messages pumped into your head overnight get with it".

Pausing to mop his brow with the artists' sponge he is well known for carrying, Mr Chuzzlewitt continued, "we need to be able to display a broad representation of style and medium that reflects the sort of work that people want to hang in their homes. We have to remember we want the public to feel comfortable with the investment they have outlaid in the art they have chosen, and that means feeling comfortable next year and the one after that. Works of art are an enduring investment that should be as much a part of the family as the dog or cat or even the kids".

Surviving a "steady on old chap" from long serving committee-man Colonel Henry Thomas Beecham, Mr Chuzzlewitt clarified his remarks by emphasizing that in his view too much art overtly challenged members of a household, causing unnecessary stress and angst. How would you like to be asked to explain what that thing hanging in the lounge means. "keep it simple", was his advice to the three rows of Polytec journalism diploma students at the front of the auditorium. "You don't ", he added, "have to think too hard about what your committing to canvas or paper, just let it flow and forget about New Zealand art as such, pagodas and thatched huts are better subjects than Victorian buildings with suspect parapets"

"The New Zealand art thing is a myth anyway" Mr Chuzzlewitt quietly added, "we Kiwis were a breakaway group as it was, bootmakers, tailors, seamstresses and farm labourers mostly and now we have been subsumed by the Pacifica thing, that's why our art is dominated by korus, cabbage trees, tapa cloth and bully beef tins. "New Zealand art is so shonky even our most famous contemporary artist had to put explanatory texts on his works ".

At this point the Waikato Times Arts reporter pulled out a packet of sandwiches and took a break in transcribing, but

it's believed invited dignitaries, members of the arts community and representatives of national groups financially supporting the visual arts, broke into sustained applause as Mr Chuzzlewitt gave details of the next awards.

Chants of "Chuzzlewitt, Chuzzlewitt" broke out among members of the framing and rendering fraternity around the hall prompting meeting chairman and Chiefs coach.

Betty (Possum) Backbar to warn that "if youse jokers don't plug it I will!" Concluding his address, Mr Chuzzlewitt popped a sponsors liquorice allsort into a glass of water, raised the glass and choked with emotion said, "This award may not be as important to this city as the Te Rapa industrial and commercial corridor, but by God it's more attractive!"

As the lights on the podium dimmed, Mrs Chuzzlewitt, a docent coach by trade and an Australian whose most recent art purchase was an old armchair entitled. "Grandma," was seen to nuzzle her husband's leg affectionately whispering as she did, "You've done it again darls, they're so confused now they'll go back to investing on the stock market....". Stuart Stubbs reporting.

FROM THE ART SCHOOL

Next term Summer commences Tuesday February 7th 2012 We look forward to seeing you back.

Anne Kalnins

BARRY HOPKINS AND NCAA

WSA Life Member and generous Waikato philanthropist, Barry Hopkins, is now the new sponsor of the National Contemporary Art Award. This national award was started by WSA who maintained the award for several years. It is now hosted by the Waikato Museum. Barry is also on the committee of the Friends of Waikato Museum, a patron of Gallery 8 in Te Awamutu and has involvement with the Aotearoa Institute <http://aotearoa-institute.bahai.org.nz/> both of which have art connections, the latter using art in the education of children.



Barry's sponsorship of the NCAA must come as a welcome lifebelt at this time of uncertainty in the leadership and sustainability of the Waikato Museum.

Painting of Barry Hopkins

WSA SKETCH CRAWL

Last October, several stalwart WSA members met at Hamilton Gardens Pavilion. The weather curtailed the event for the first time in our few years but not before everyone had a chance to do some sketching. So we intend to repeat the venue – it has so much to offer.

So on **Saturday 18th February** we'll meet at **Hamilton Gardens Pavilion at 11am**. Carla Parry will be acting as facilitator again. **Meet at the Pavilion Courtyard**. Bring the usual gear for art and the weather. Not special skills required and fellow WSA members are usually generous with their help and ideas. Show and tell is not compulsory. To find the group if you are late call Carla on 0210734890.

Have a look at the article on the Monet exhibition to see the importance of the sketch (and more basically 'the line') in art.

NEW ZEALAND PAINTING AND PRINTMAKING AWARDS 2012

GALA OPENING

6pm Friday 17th February – Gardens Pavilion.

Tickets \$10 (members and non member) from WSA Office or at the door

Exhibition (till 1 March)

Weekend opening hours 10am to 6pm

Week days 12pm to 6pm

NZPPA judge for this year, John Daly-Peoples has selected 52 finalists. Six from the Waikato, lots of paintings and nine print works. [Looks good to me. Ed.]

There will be help needed at the following times. If you can help please call Maree Glass. 07 858 3099

MONDAY Feb 13TH 11 AM UNPACKING

TUESDAY Feb 14TH 1 PM HANGING

FRIDAY MARCH 2ND 9 AM PACK UP

MATISSE (– THE LINE KING) AT GOMA

The GoMA gallery in Brisbane is now showing an extensive exhibition of Matisse's sketches. The exhibition lasts until 4th March 2012. There are nearly 3000 of his sketches and other works in the exhibition. Try grab a seat !!!

This exhibition emphasises the importance of drawing or sketching in art. It is recognised that drawing lost its importance in art training during the 1970s. People were wondering if drawing was really needed – but it is coming back into prominence in art training. Not only is it seen as an exercise but is seen as a lifelong practise that maintains and improves that eye hand coordination essential for painting. Matisse himself, along with colour, used the line – in fact tried constantly to perfect the perfect line – all through his art career. These days in some galleries, paper and pens provide a frenzy of activity on weekends – kids,

parent, grandparents all over the place doing sketches. So don't ignore the sketch – use it as a constant exercise the way poets adopt the daily habit of scribbling. And learn from others – the WSA sketch crawl is a great way to get the habit going, at the same time meeting up with fellow artists.



Back to Matisse. This exhibition of his drawings, "Matisse: Drawing Life" is probably one of the most interesting collections of his art seen for a long time. It includes 168 drawings, 116 prints, 10 illustrated books, four paper cut-outs (the 'line' is even more important here) and seven paintings. Matisse started art as a draughtsman and printmaker. He did this for money, copying the work of other artists as reproductions. He moved from this to creating his own artwork, drawing life as he saw it. He carried his sketchbook everywhere, capturing his own life as well as the lives about him. This exhibition in Brisbane has taken years to assemble. The works have been assembled from all over the world, even from as far as St Petersburg. The collection does Matisse proud. It not only portrays his art but also, because he sketched for himself rather than for a gallery, the more intimate nature of his art.

As Mirium Cosic explains, in *The Weekend Australian* – November 26-27 2011

"(Matisse's) discipline manifested itself clearly in his drawing. He drew every day (even on his deathbed (Ed)) as a technical exercise to keep his hand and eye coordinated, as an investigation of ideas and as preparation for everything"

Don't think you can draw? Remember that Matisse failed the drawing test when he first sat the entrance exams for the 'Ecole de Beaux Arts'. Drawing is personal and you are capturing 'your' essence of the subject and possessing it.

Have a look at http://qag.qld.gov.au/exhibitions/current/matisse_drawing_life

The Editor thanks Gillian Collom of Brisbane for supplying material used in preparing his article.

Barry Smith

WSA ART SCHOOL Summer TERM 2012

PHONE 8394481 or fax 8393869 email wsa@wsa.org.nz Artspost 120 Victoria St Hamilton



WAIKATO SOCIETY OF ARTS

Classes start week of 7th Tues February - (All courses are 8 weeks unless otherwise stated below)

	MONDAY Classes start 13 Feb	TUESDAY Classes start 7 th Feb	WEDNESDAY Classes start 8 th Feb	THURSDAY Classes start 9 th Feb	FRIDAY Classes start 10 th Feb
MORNING	Oils and mixed media Own work supportive friendly untutored. 9.30am-12.00pm \$76 (members \$68)	Oil painting Good skills for painting beginners/continuers . 9.30am-11.30am \$131 (Member \$116)	Painting and Drawing techniques positive support. Continuers +experienced 9.30-12 \$ \$141 (Members \$126)	Creative Watercolour or acrylics Beginners/ Cont. Going further 9.30am-11.30am \$131 (members \$116)	Creative Watercolour Own work with tutor support. Continuers 9.30am-11.30am \$131 (members \$116)
	ART mix for absolute beginner Draw, Pastels, Watercolour Oils Acrylics 5 weeks materials supplied 9-30-11.30 \$84 (member\$69)	Untutored this term EXPERIMENTAL PRINTMAKING Woodcuts Mono etc Includes materials 9.30am-12.00pm \$72 (members \$69)	Cottage Crafts Make to use, patchwork, Crochet etc . 9.30-11.30 \$131 (member \$116)	Etching + Drypoint Includes materials Beginners/ continuers 9.30am-12.00pm \$142 (members \$127)	You CAN Draw Beginners skills to get started 9.30-11.30 6 weeks \$100 (member\$85)
			PAINTING for beginners (Acrylics) Great exercises to start painting 9.30-11.30 \$131 (member \$116)	Children's Art 5-7 yrs 7 wks Improves imagination. Variety of art, Materials supplied 4.00pm-5.00pm \$84	SATURDAY 11th Feb ILLUSTRATION Beginners/continuers Look at different illustration techniques. 9.30-11.30 \$131 mem \$ 116
AFTERNOON	Children's Art 5-7 yrs 7 wks Improves imagination. Variety of art, materials supplied 4.00pm-5.00pm \$84		Art Workshop 12-14yrs drawing and painting 4.00 pm-5.30pm \$84	Children's Art 8-13 yrs Improves creativity Variety of art activities 4-5.30pm \$84	<p><i>Materials are supplied for the first lesson of adult classes Art in the holidays for children. April July Sept. The wsa reserves the right to deny further participation in any given class if it is determined that this is in the classes best interest.</i></p>
	Children's DRAWING 8-13yrs gain skills 4.00pm-5.30pm \$82	Children's Art 8-13 yrs Improves creativity Variety activities Materials supplied 4pm-5.30pm \$84	WSA Art School, Level 1 ArtsPost Building, 120 Victoria St Hamilton WSA members / high school students: \$15 discount		
EVENING	Postponed this term EXPERIMENTAL Printmaking. Woodcut/mono Includes materials 5.30pm-8.00pm \$ (members\$)	Beginner Art Collage, Textures Paint etc Learn skills and enjoy, fun to try 6-8pm 5 weeks \$85 Or 8 weeks \$131	DRAWING THE HUMAN BODY Beginners/continuers 6.00pm-8.00pm \$131 (members \$116) + model fee \$5 per session	<p>FEEES TO BE PAID BEFORE CLASS START (or by prior arrangement) Places are not secure until paid. payment types: Cash/Cheque/Direct credit/Eftpos/Credit card. class Fax your enrolment to: (07) 839 3869 (on white paper), post to: WSA Art School, PO Box 1018, Hamilton, Summer 2012</p> <p>Class Day/time</p> <p>Name..... Address</p> <p>Ph..... Mob..... . Amount</p> <p>Credit Card (circle one) Visa Mastercard Holders name..... Exp.Date...../..... Card number</p> <p>Children - does your child have special needs? yes / no</p> <p>Signed Date</p>	
	Drawing for beginners Good skills 6-8pm \$131 (member \$116)	Painting with Acrylics Good beginner/cont skills 6.00pm-8.00pm \$131 (members\$116)	Untutored this term Etching+ Dry Point Beginners/continuers Includes materials 5.30pm-8.00pm \$72 (members\$69)		
	Oil painting for beginners continuers Supportive + positive 6-8pm \$131 (member\$116)	CARTOONING Age 11years upwards 6 weeks 6pm-8pm \$100 (mem\$85)	The PORTRAIT Beginners etc 6-8pm \$79 (Mem \$64) + \$5 model fee 5 weeks		

WSA wishes to acknowledge the support of the following organisations:



BELONG WITH THE BEST

Waikato Society of Arts is a major contributor to the visual arts in Hamilton.

This is largely due to the quality and contribution of our members. Learner, amateur, semi-professional, professional and supporter artists. We remind you that the subscriptions for this year are due but also encourage members to invite those with similar interests and talents to join up.

Belong with the best in the arts in Hamilton and the Waikato!

Dianne Yates

SOCIAL MEDIA – FACEBOOK, TWITTER ETC

If you're short on ideas on your creativity or marketing your work have a look at this site which will give you some good tips on marketing and setting up your Facebook page – and the advantages of doing so. It is part of 'the Big Idea'. Click here <http://www.thebigidea.co.nz/generator>

THE WSA WEBSITE – MEMBER OPPORTUNITY TO HAVE OWN PAGE

An artist's page is a benefit for paid-up WSA members only. To get started with your own page, email Janice Meadows at jmeadows51@gmail.com and she will reply with further instructions. Janice now has the pages underway. There are now new pages. Have a look at the WSA site - artists - to get an idea of what your page might look like and the information Janice requires. WSA can provide help with photographs etc.

Contact Janice as above.

Thanks to Trust Waikato for the Development Grant that funded the website upgrade.

ARTIST ROOMS FOR HIRE

The art rooms at WSA Art School are able to be rented. If any members are interested in hiring these for themselves or a group, please contact Anne 07 839 4481

CONTRIBUTIONS TO NEWSLETTER

Art Connections monthly newsletter welcomes articles and images relating to the arts, and listings of upcoming art events. All contributions need to be provided by 20th of each month to Eriko Hulse at the WSA office, email wsa@wsa.org.nz or direct to me at 2smiths@wave.co.nz Please type "Newsletter" in subject line.

MEMBERSHIP SUBSCRIPTIONS

Subscription Rates (1 Sept 2011 – 31 Aug 2012)

Double	\$65 (Seniors \$50)
Single	\$45 (Seniors \$40)
Student	\$20 (Current Student I.D. required)

You can make pay your subscriptions (or make donations) to the WSA by post or via the Internet. Our WSA Account is:

Westpac 03 0306 0217827 00

DONATE

You can pay your subscription or make donations to WSA direct or via the Internet.

Our WSA Account is: The Waikato Society of Arts Inc.

03 0306 0217827 00 Westpac Hamilton

MEMBERSHIP

As an Incorporated Society, members who wish to 'resign' should notify the society in writing rather than just stopping payment of their subscriptions.

Art Connections newsletters, and all the benefits of participating in the WSA now only go to those who have paid their subscriptions.

Please ensure you have renewed your subscription for the current year and remind friends that they may not have paid their subs if they haven't received Art Connections.

WAIKATO SOCIETY OF ARTS MEMBERS' EXHIBITION 2012

Title :

'Humanity in all its Guises'

Media/Theme:

Everything from nudes and portraits to city and landscapes and more.

The Exhibition Committee would like to see some emphasis on recycling and that it would be great to see lots of different media used.

Exhibition dates : 4 May - 4 June

Venue: ArtsPost Galleries

120 Victoria St. Hamilton

Entry details will be included in March newsletter

FROM THE EDITOR

This WSA Art Connections Newsletter could not be created without the help of Dianne Yates, Anne Kalnins, Carla Parry, Ruth Davey, Garry Douglas, and some of our Executive Committee members and other WSA members and, of course, Eriko. Thanks.

And a very special thanks to SHARP who continue to help us substantially with photocopying and to Warehouse Stationery who supply our paper. Please do let them know how grateful we are when you do your buying.

Barry Smith

120 Silverdale Rd, Hamilton
Monday-Friday 8:30am-5:30pm
Saturday 9am-1pm

Contact Sarah:
P (07) 856 4236
s.marston@clear.net.nz

Framing **the** WORKSHOP

Sarah Marston *Diploma in Fine Arts*

Creative custom framing.
10% discount for WSA
members

20-36% OFF
SELECTED DA VINCI BRUSHES & SETS
Outstanding value on these quality brushes from Germany.

30% OFF
PEBEO BRUSH SETS

30% OFF
GOLDEN & PEBEO GESSO
AND SCHMINCKE PRIMERS

20-35% OFF
ALL MANIKINS

25-40% OFF PAINT ALL ARTIST & STUDENT QUALITY PAINT
GOLDEN • PEBEO • SCHMINCKE • WINSOR & NEWTON
MATISSE • ART SPECTRUM • ATELIER • OLD HOLLAND

35-50% OFF EXPRESSION CANVAS / **UP TO 50% OFF** CRETACOLOR DRAWING SETS

UP TO 36% OFF GORDON HARRIS VISUAL DIARIES

35% OFF HAHNEMUHLE HARDCOVER SKETCHBOOKS

20% OFF HAHNEMUHLE BRITANNIA WATERCOLOUR PAPER

20% OFF HAHNEMUHLE DRAWING & SKETCHING PAPER

15% OFF SELECTED GORDON HARRIS PADS Great priced quality pads for markers & pen, drawing, sketching and tracing.

PLUS great deals on a wide range of graphics equipment including technical and drawing pen sets, markers, drawing boards and more...

386 Anglesea Street, HAMILTON, ph 07 834 3952
WEBSTORE www.gordonharris.co.nz

Gordon Harris
THE ART & GRAPHIC STORE

Offers available while stocks last. Products may vary between stores. Sale ends 19 March 2012.

WSA OFFICE AND ART SCHOOL

ArtsPost, 120 Victoria Street
P.O. Box 1018 Hamilton, 3240
Phone Anne or Eriko on 839 4481
Website: www.wsa.org.nz

EDITOR

Barry Smith phone: 07 8558296
Email: 2smiths@wave.co.nz

WSA EXECUTIVE COMMITTEE

Patron:	Joan Fear
President Elect:	Dianne Yates
Hon. Solicitor:	Warren Scotter
Auditor:	Grant Mackintosh
Treasurer:	Garry Douglas
Executive Committee:	Barry Smith, Carril Karr Melany Sutherland, Ken Price, Prasanthi Amerasinghe
Secretary:	Eriko Hulse

ARTSPOST

ArtsPost Facebook page

ArtsPost now has its very own Facebook page. Be sure to hit 'like' on <https://www.facebook.com/ArtsPost> to receive regular updates on exhibitions, artists, new stock, to view photos of exhibitions and opening previews and other interesting arts related news!

13 January - 13 February

RECLAIMING SCRAPS OF NEW ZEALAND BY SCULPTURE

ADRIAN WORSLEY
SCULPTURE

Adrian has created an exhibition of sculptures that embrace New Zealand and some of our natural beauties. These sculptures are works of steel created from reclaimed scrap metal, tools, machinery and implements sourced from around the New Zealand countryside.

O TATOU TAONGA
OUR TREASURES
RICK FISHER

REALISM FINE ART CONTÉ, GRAPHITE AND COLOURED PENCIL

O Tatou Taonga is a look at our native treasures, capturing the beauty, character and personalities of native New Zealand in its natural habitat.

ANTARCTICA: DREAMS AND DISCOVERIES BARRY AND CATHERINE SMITH

IMAGES OF ANTARCTICA THROUGH PAINTINGS AND WOODCUTS.

This exhibition celebrates the centenary of the journeys of Amundsen and Scott to the South Pole through paintings and prints chosen to represent Antarctica's history and scenic splendour.

17 February - 19 March 2012

AN OPENING PREVIEW FOR THESE EXHIBITIONS WILL BE HELD ON 16 FEBRUARY AT 5.30 PM.

WAIKATO SOCIETY OF POTTERS ANNUAL EXHIBITION

Ceramics
This exhibition highlights the diversity of approaches to clay that are present in the Waikato. It is a selected exhibition and sets the pottery community a benchmark to aim for.

WHAEA TE ITI KAHURANGI RUTH PORT

Harakeke, pingao, kuta

This exhibition is to acknowledge Papatuanuku, our earth mother. Her constant support, sustenance and love is often overlooked in our busy lives. We as humans are but one strand of her progeny and this exhibition also highlights our other brothers and sisters who share the planet with us.

BEFORE WE MADE THE BUTTER

DR MIRIAM SAPHIRA

Oil on board
Caves in the Waikato were hidden along the banks of the rivers and early settlers found them useful to store butter before refrigeration was invented. The stalactites and stalacmites represent holding tight to old ideas and the mites growing up with new possibilities.

WALLACE GALLERY MORRINSVILLE

Wallace Arts Trust Collection

14th December to 19th February 2012

Photo Shoot
Photography from the Collection
February 23rd to April 15th
Philip Trusstum
Works from the Collection

Main Gallery

January 12th - February 7th 2012

Barbara Swarbrick
Brunfelisa pauciflora
Something for everyone! Contemporary realism, collage, abstraction and assemblages.
Robert Bildre
Silhouettes of Cultural growth
installations and collaged/painted wall panels looking at cultural change in New Zealand from a political and social perspective.

February 9th – March 6th

John Hoby Paintings, 2012
Sharen Watson 6 eyed light box
"A light box illuminates the subject matter, throwing stark light into every vulnerable corner"
Preview Wed. Feb 8th 6-7:30pm

Matamata-Piako Community Gallery

January 12th - 24th 2012

Shirley Thomas
New Zealand landscapes
Oil painting. A celebration of the colour and depth of New Zealand's landscapes

January 26th - February 7th 2012

Julia O'Sullivan
Heavenly Virtues and Deadly Sins
Fantastical fairy tales; bold story-telling paintings to fire your imagination
Preview Wed. Jan 25th 6-7:30pm

February 9th – 21st

Ann Byford The that that it is
"seeing not the postcard image"... bold paintings of the iconic landscape and architecture of the Waikato District
Preview Wed. Feb 8th 6-7:30pm

February 23rd – March 6th

Lynnette Smallwood
Vivid, psychedelic, entrancing... Creative contemporary photography
Preview Wed. Feb 22nd 6-7:30pm

THE SCULPTURE PARK WAITAKARURU ARBORETUM

Exhibition: Summer: sky above, earth below

Curator: Andrew Clifford

Dates: 20th November 2011 – 4th March 2012

'Summer 2011: sky above, earth below'. Guest curator Andrew Clifford has selected a fascinating range of works that will excite and intrigue visitors to the Park.

Exhibition: Autumn: call and response

Curator: Kim Paton

WHAT'S ON OR COMING 2

Art Connections February 2012

Dates: 18th March 2012 – 10th June 2012

Autumn: call and response presents works from emerging artists that wrestle with the inherent challenges of the scale and natural beauty of the landscape at the extraordinary Waitakaruru Arboretum. The site has a rich history spanning 20 years of rehabilitation of a once derelict quarry. It offers a diverse and challenging environment for artists exploring a range of sculptural, environmental, land based and conceptual works that communicate with the landscape and engage with the full force of the environment.

Be prepared for a wonderful day of diverse visual experiences when you visit the 'art place to be' just east of Hamilton in the lush Waikato countryside. The Sculpture Park at Waitakaruru Arboretum has a Café open on weekends and upon request. Visit www.sculpturepark.co.nz for further details.

Time: 10.00am-6.30pm

Entry fee: \$10.00 adults (15+), \$5.00 (5-12 yrs.)

THE FRAMING WORKSHOP

DECONSTRUCTING TECHNOLOGY
embossed prints .caroline.blair.art.

February 3 - March 1

opening preview Friday February 3 5.30 n- 7pm

The Framing Workshop
120 Silverdale Road, Hamilton
www.theframingworkshop.co.nz

FROM CREATIVE HAMILTON

Inspire aims to support up and coming and established talent in Hamilton to develop a professional career in the Arts sector, by mentoring artists with experienced colleagues in their field with practical industry experience and knowledge that can be shared.

For more information or to download an application form please visit our website www.creativehamilton.org.nz

Contributed by Creative Hamilton 07 838 6424

BAFFIN STREET STUDIO

w/b Mon 13th Feb

Monday afternoon painting group starts again.

Tuesdays 1 – 4pm Printmaking for beginners

Thursdays – press available for experienced printmakers, Small charge for studio use.

Thursday evenings: Printmaking for beginners, 6 week course.

For more information email hilary@hilaryramage.co.nz

February in The Persimmon Tree Café:

New work by Nan Mulder, Hilary Ramage, Heather Eyre, Michelle Boccock and Harry Hart

NEW ZEALAND PAINTING & PRINTMAKING AWARD 2012

GALA OPENING

6pm Friday 17th February – Gardens Pavilion.

Tickets \$10 (members and non member) from WSA Office or at the door

Exhibition (till 1 March)

Weekend opening hours 10am to 6pm

Week days 12pm to 6pm

INSPIRIT STUDIO & GALLERY

1 -29 Feb

Garden Art Collection-

Featuring stunning & unique garden art and outdoor sculpture in a wide variety of mediums including wood, steel, clay and stone. Featured artists Ian Webster, Mark Dimock, Bruce Young , Dave Bryant, Betty Collings, Gene Pospisil, Jocelyn Pratt & Marti Wong.

PH 07 856 3170

Mobile 0274 386 416

360 Pencarrow Road RD3

Tamahere

Hamilton 3283



Photo above: Planter by award winning Coromandel based clay artist Ian Webster-handcoiled and stone fired clay sculpture.

WAIKATO SOCIETY OF ARTS MEMBERS' EXHIBITION 2012

Title :

'Humanity in all its Guises'

Media/Theme:

Everything from nudes and portraits to city and landscapes and more.

The Exhibition Committee would like to see some emphasis on recycling and that it would be great to see lots of different media used.

Exhibition dates : 4 May - 4 June

Venue: ArtsPost Galleries
120 Victoria St. Hamilton

Entry details will be included in March newsletter